

# Anti-OX40L hIgG4 Antibody(Amlitelimab)

## Product Information

GM-82533AB-10	10 µg
GM-82533AB-100	100 µg
GM-82533AB-1000	1 mg

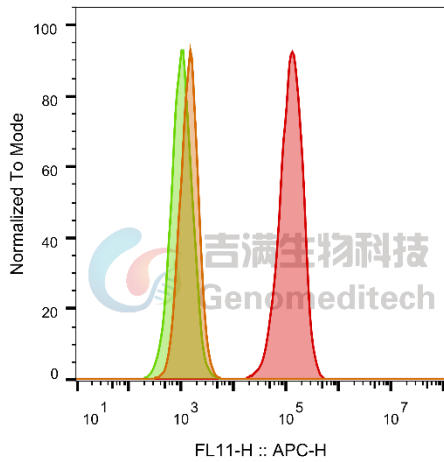
## Antibody Information

Species Reactivity	Human; Cynomolgus
Clone	Amlitelimab
Source/Isotype	Monoclonal human IgG4, κ
Application	Flow cytometry; Block assay
Specificity	Detects OX40L
Gene	OX40L
Other Names	TNFSF4, GP34; CD252; TXGP1; CD134L; OX-40L; TNLG2B
Gene ID	P23510-1 (Human); G7NVH7 (Cynomolgus)
Background	The ligand of OX40 (OX40L, CD252, TNFSF4) belongs to the TNF superfamily and was first identified as gp34 a protein on HTLV-I transformed cells and later found to bind OX40. Amlitelimab is an anti-OX40 Ligand (OX40L) monoclonal antibody (mAb). It inhibits OX40-OX40L interaction, and can be used in the research of atopic dermatitis.
Storage	Store at 2-8°C short term (1-2 weeks).Store at ≤ -20°C long term. Avoid repeated freeze-thaw.
Formulation	Phosphate-buffered solution, pH 7.2.
Endotoxin	< 1 EU/mg, determined by LAL gel clotting assay

## Data Examples

### Flow cytometry

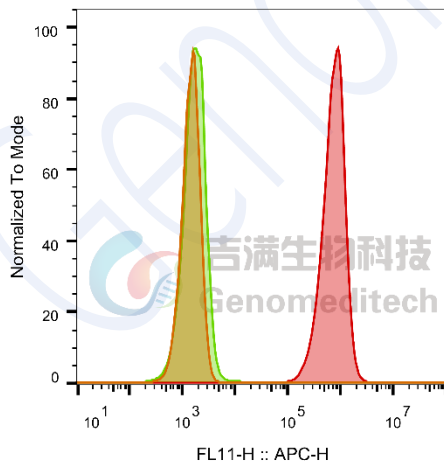
The recommended usage range is 0.5-4  $\mu$ g per test. H\_OX40L HEK-293 Cell Line (Catalog # GM-C35017) was stained with Anti-OX40L hlgG4 Antibody(Amlitelimab) (Catalog # GM-82533AB) or isotype control antibody, followed by anti-Human IgG APC-conjugated Secondary Antibody.



SampleID	Geometric Mean : FL11-H
HEK-293 anti-OX40L+APC-2nd Ab	1448
HEK-293 H_OX40L H_IgG+APC-2nd Ab	1048
HEK-293 H_OX40L anti-OX40L+APC-2nd Ab	122442

### Flow cytometry

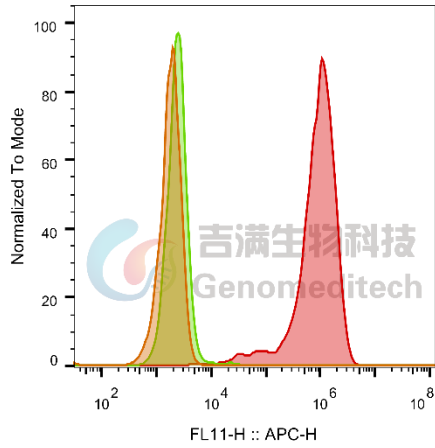
The recommended usage range is 0.5-4  $\mu$ g per test. H\_OX40L CHO-K1 Cell Line (Catalog # GM-C35016) was stained with Anti-OX40L hlgG4 Antibody(Amlitelimab) (Catalog # GM-82533AB) or isotype control antibody, followed by anti-Human IgG APC-conjugated Secondary Antibody.



SampleID	Geometric Mean : FL11-H
CHO-K1 H_OX40L+APC-2nd Ab	1459
CHO-K1 H_OX40L H_IgG+APC-2nd Ab	1722
CHO-K1 H_OX40L anti-OX40L+APC-2nd Ab	6.94E5

### Flow cytometry

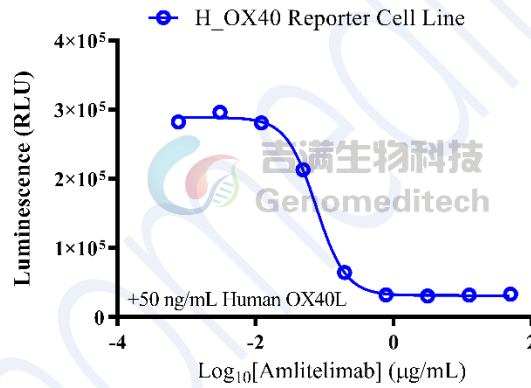
The recommended usage range is 0.5-4  $\mu$ g per test. Cynomolgus\_OX40L CHO-K1 Cell Line (Catalog # GM-C35029) was stained with Anti-OX40L hlgG4 Antibody(Amlitelimab) (Catalog # GM-82533AB) or isotype control antibody, followed by anti-Human IgG APC-conjugated Secondary Antibody.



SampleID	Geometric Mean : FL11-H
CHO-K1 anti-OX40L+APC-2nd Ab	1776
CHO-K1 Cyno_OX40L H_IgG+APC-2nd Ab	2421
CHO-K1 Cyno_OX40L anti-OX40L+APC-2nd Ab	7.78E5

Block assay

Anti-OX40L hIgG4 Antibody(Amlitelimab) (Catalog # GM-82533AB) inhibits H\_OX40 Reporter Cell Line (Catalog # GM-C30855) Luminescence induced by Human OX40L Protein; His Tag (Catalog # GM-83111RP). IC50 for this effect is 0.07545 µg/mL



	H_OX40 Reporter Cell Line
IC50	0.07545